

## CarTFT-Intel-Graphics (800x480 + 1366x768 enabled)

### System requirements :

- Intel based onboard graphics adapter
- Windows XP/2000/NT, Linux, WinCE5/6
- CTF700(-H), CTF800 oder MM400 V1+V2 oder CTF1020 Display or 700Y, 700TS(V), 1020YV, 1020TSV (choose the right package !)

### Hint :

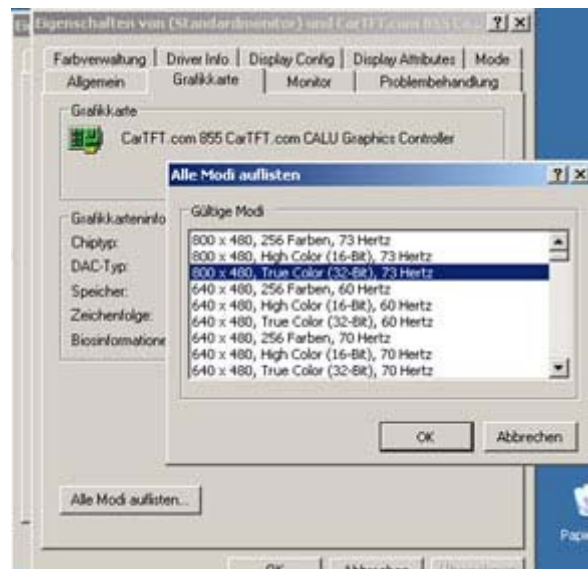
If available, then deinstall the existing graphics driver from system manager, software section (add/remove programs). Then reboot the PC. Windows will try to reinstall the old drivers. Just cancel every installation attempt.

### Installation :

- 1.) Switch to „Utilities“-directory of the driver package and start „Setup.exe“ (or „SetupNT.exe“ with Windows NT).
- 2.) Choose „Installs driver and application files“.
- 3.) Confirm the software licence dialog with „I agree“.
- 4.) Confirm all messages, which point to non-Logo compliant drivers with „Continue installation“.
- 5.) After installation is done, the PC will reboot.
- 6.) The driver has been installed.

### Enable 800x480-resolution :

Switch to display settings.



Then choose „Advanced“ and „graphics adapter“. Now click on „List all modes“.

The resolution „800x480, True Color (32-bit), 73Hertz“ is listed at the top of the list.

Version 3.0, 03.10.2007

Oliver Aigner

---

CarTFT.com

(support@cartft.com)